



LEP MANUFACTURING BOARD

3rd July 2019 2-4pm

Siemens UK, Teal Park Road, North
Hykeham, Lincoln, LN6 3AD

(car registration needed in advance for access please)

Paper 0 - Agenda

Time	Item and brief description	Lead	Access/Circulation
2.00	Welcome, Introductions & Apologies Declarations of interest New members Nick Broom, Dr Mike Gallimore UoL	Samantha Harrison	
2.05	Draft Minutes from 2 October 2018	Ruth Carver	Paper 1
2.10	Purpose of the Board	Ruth Carver	Verbal Update
2.20	Operational Activities update	Samantha Harrison	Paper 2
2.15	Debate - Manufacturing Sector Priorities for Action (all board members to research and bring their top 3 priorities for the sector)	All - we will devise the new action plan based on the feedback	Board member discussion
3.30	Boston College EMAT Centre	Richard Chambers Boston College	Paper 3
3.45	Internationalisation and Economy update	Kevin Ross	Verbal Update
3.50	Roundtable updates	All	Verbal Update
4.00	Any Other Business	All	

Apologies: Dr Megan Ronayne, David Earnshaw, Justin Brown, Paul Taylor

Date of Next Meeting - TBC



GLLEP MANUFACTURING BOARD

2ND OCTOBER 2018

MoCap Tech Hub, University of Lincoln
Sports Centre, Lincoln, LN6 7TS

Draft Minutes

Present: David Earnshaw, Edward Tong, Kay Pryszlak, Kevin Ross, Michael Hague-Morgan, Paul Taylor, David Talbot

Apologies: Garry Wilkinson, Megan Ronayne, Darren Joint, Steve Middlebrough, Ray Newell, Richard Allarton, Marcus Pearson, Samantha Fells

LEP Executive: Ruth Carver, Samantha Harrison

For Agenda Items: Franky Mulloy, Kevin Hallsworth, Andy Brooks

Item 1 - Welcome, Apologies & Declarations of Interest

Attendees and Apologies as above

No declarations of interest received.

Welcome from Franky Mulloy (UoL) - Motion Capture Tech Hub

- Motion Capture (Mo Cap) allows the capture and quantification of incredibly precise movements (up to 18,000 fps, www.designblok.co.uk).

Benefits: -

- Scientific data to guide in the design process. Could help to identify potential design flaws in prototyping.
- Analysis of material deformation suitably tested with design function in mind.
- Full human motion analysis, including how feet interact with the ground (force plates) to analyse human-equipment interaction.
- Provision of motion capture data for future analysis, research and development, animation, and online media.
- Can be used to identify problems on production lines
- Could be a useful work study/MTM tool?
- Avoid repetitive strain injuries?
- 3D scanning and printing also available. UoL have considerable design expertise and fabrication technologies.

If any of the above is of interest contact Franky

fmulloy@lincoln.ac.uk

A copy of the presentation can be found at:

https://drive.google.com/file/d/17d6v7D0LuAPM1g8jE5_HPUptu6bLQ9du/view?usp=sharing

Formal meeting commenced.

Previous Actions completed

- Manufacturing Plan Refreshed - see later feedback
- BREXIT toolkits are now available
- BREXIT seminars are taking place

No other outstanding actions were discussed.

The second GLLEP Manufacturing e -newsletter has been issued.

Please can members forward the newsletter to all their manufacturing networks and encourage sign ups

Sector events are being delivered;

- Introduction to Industry 4.0
- Are you ready for BREXIT ? 4 Oct Lincoln, 21 Nov Spalding, 22 Nov Boston, Dec Grimsby
- GLLEP Manufacturing Conference - March 2019

Item 5 - Economics & International Supply Chain Opportunities Lincolnshire Economics - Lincs Research Observatory

- Overseas sales levels continue to fall - dive continues.



- Recent tariff imposed by the US and China are showing tentative signs of dampening activity.

Internationalization - Supply Chain.

Lincs County Council - Economic Forum

- 2nd meeting Oct 11th - key objective is build relationships - Servitization.

Other opportunities -

- Simon Murphy joins the LCC Economic Development team - international focus.
- 5GRIT - rural integrated test bed - looking for machinist with 4.0 connectivity.
- Immersive technology - VR and AR - see KR.
- 4.OIR - trigger a re-shoring - benefit equationfor shifting production activities v low cost manufacturing.
- LEP conference
 - Digitization as part of your business strategy
 - Recurring payback of robotics

Item 6 - Manufacturing Barometer Update

As included with Board papers.

Item 7 - Any Other Business

Kay P - Feedback from Engineered in Grantham

- 9 companies involved - 6 x working with college to define content and 3 x working to collate a marketing effort.
- Engineering Apprenticeships to start Sept 2019

- The content stumbling block is engineering uses a two main types of machine code - G codes (a generic base level) and Mazatrol (linked to Mazak CNC)and rarely do companies do both. Currently Grantham will only teach Mazak.
- Kay is exploring Boston college's ability to teach G codes.
ACTION Feedback at meet meeting

Paul Taylor

- Would like to discuss in more detail the Boards purpose/role at the next meeting.
-

Next meeting - Boards Purpose /Brexit Challenges

The meeting was closed at 11.55am

Date of next meeting to be arranged.

Paper 2

GLLEP Manufacturing Board Operational Update

1 Manufacturing in Action Conference

- 1.1 The successful return of the Greater Lincolnshire Manufacturing Conference took place at the end of March, with an impressive collaboration of robotic demonstrations, industry experts and engaging panel discussions on robots vs humans in the production process. The event, hosted by Business Lincolnshire and Natwest Bank, was attended by over 120 delegates from across the county, which included tours of the production line at the host venue, Sleaford Quality Foods.

2 New ERDF Business Support Growth Hub Bid Funds secured

- 2.1. Business Lincolnshire Sustainable Business Growth 2 (BLSBG2) is a £5.28m project which will enable the Business Lincolnshire Growth Hub to extend the business support services being provided via the Sustainable Business Growth and Digital Business Growth projects from July 2019 to May 2022. The support programme will be marketed externally as Growth Lincolnshire.

The project will be mostly focussed towards established businesses and 1087 enterprises will be provided with support at least 3 hours of support with 768 enterprises receiving either 12 hours of advisory support and/or at least £1000 grants. Overall the project will create 204 jobs whilst increasing productivity and unlocking private sector investment of £775,000.

Growth Lincolnshire will provide a comprehensive and enhanced offer of one to one support, capacity building and growth funding, and will include the following support:

- ✓ 1 to1 and 1 to many business support covering
 - information advice and guidance and action planning for growth
 - specialist advice including
 - investment readiness/ access to private sector investors
 - resource efficiency
 - developing use of digital technologies and ICT
 - Supply chain development
 - Legislative Best Practice - early stage best practice advice to businesses to achieve legislative compliance
 - Other niche / specialist support as demand dictates eg Manufacturing, IP,
 - enhanced assistance for high growth potential SMEs (scale ups)
 - Business Leaders Peer Support and Mentoring
- ✓ Events, briefings, workshops and masterclasses
- ✓ Business Growth Grants - providing capital (60% match) and revenue (50% match) of £1,000 to £10,000 to enable growth projects to be brought forwards
- ✓ Digital Growth Grants - providing £1,000 (50% match) grants to enable businesses to invest in digital products and services

3 Business Support Simplification

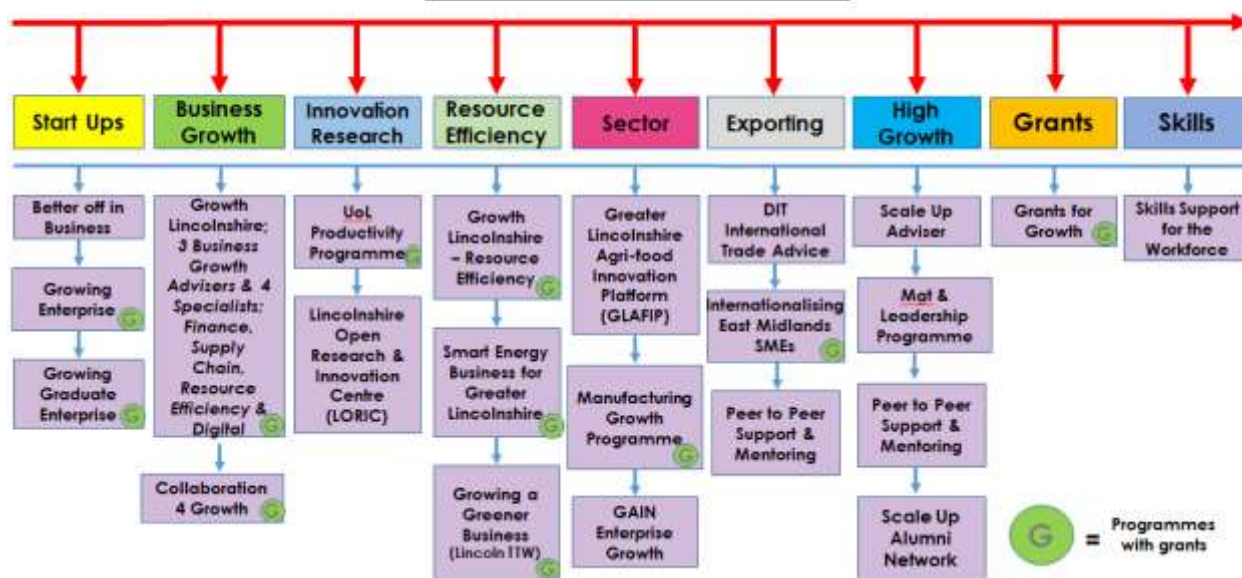
- 3.1 The majority of the existing ERDF programmes come to an end during May/June 2019. The following programmes listed below have secured ERDF continuation funding for another 3 years delivery up until 2022, this will help limit the stop/start nature of publically funded services.

Paper 2

GLLEP Manufacturing Board Operational Update

Business Lincolnshire Growth Hub ESIF Business

Support Programmes



4 Manufacturing Growth Programme

4.1 Following on from the success of the Manufacturing Growth Programme since its launch in October 2016,

<https://www.businesslincolnshire.com/explore/funding/search/manufacturing-growth-programme> the programme has now been extended and be on hand to provide grant funding to Lincolnshire based manufacturing businesses to support their growth between now and September 2021.

In addition to the opportunity to access grants of up to 43% towards the cost of projects (Max project value £10,000, minimum grant £1,000) that require the use of external consultants, coaches or training providers EGS Ltd have enhanced their programme to include a series of free to attend manufacturing themed workshops.

These ½ day workshops will be covering a range of subject areas that are often key to helping SME manufacturers to improve their overall business performance and profitability with focus topics such as

- Lean Awareness
- Improving layouts and 5S
- VSM/Process Mapping
- Supply Chain (Inventory Management)
- QCD
- Problem Solving
- Change Management
- Vision & Strategy

Contact Marcus Pearson Tel: 07790358517 Email: Marcus.pearson@egs.live

5 GLLEP Deal Project Update - University Technology & Innovation Centre, Grantham

Paper 2

GLLEP Manufacturing Board Operational Update

5.1 Background

GLLEP approved a provisional allocation of £2m towards a Technology and Innovation Centre in Grantham was given on 20th July 2017.

5.2 The Project

The project will be managed by South Kesteven District Council (InvestSK) in partnership with the University of Lincoln and Grantham College.

The scheme aims to create a new local University Technology & Innovation Centre to serve the South Kesteven area to enable higher and degree level Apprenticeships, Diploma's and short courses to be delivered in a professional business environment and tailored to meet business needs.

The Centre will be a local contact point for businesses for professional networking and will provide space to them work and collaborate. It will be an open door to business support services and University contacts and facilitating opportunities for sharing ideas and knowledge transfer. The new Centre will address a higher education cold spot and change the face of provision in Grantham and across the whole of the District of South Kesteven.

The project will provide an anchor and access for South Lincolnshire higher levels skills development and a direct link to a University for local businesses. The building location will directly contribute to the regeneration of Grantham Town Centre and the floor dedicated to the centre will be above a new cinema and retail complex, enabling excellent access and promotion of the new offer. It will offer micro incubation and business networking aimed at accelerating economic growth and productivity. The University Centre will collaborate closely with Grantham College and encourage wider partnership contribution and participation from both the private providers, employers as well as the public sector.

Alongside the generic management courses, the centre will promote the Engineering and Manufacturing higher apprenticeship standards. These new standards offer continued professional development for food industry professional, process automation engineers, food and drink advanced engineers, plant engineers and postgraduate engineers. Other higher level Apprenticeships or short courses may include Digital technologies, environmental health, health, care, potentially civil engineering, and building design to meet local employer needs.

5.3 Update

The project has been progressed in conjunction with the St Peter's Hill re-development in Grantham and will be located on the 2nd floor of the new building as part of the growing town centre offer. The new building will also house a 5 screen cinema and ancillary retail units on the ground floor. The £2m Growth Deal grant for the UTIC will support a number of items including the: site preliminaries, capital build, fibre connectivity, public realm and internal fit out of a capital nature.

The ground breaking occurred in May 2018, however the project formally began in April 2017 with site preliminaries which were undertaken to clear the land, survey and prepare appropriate utilities for the build to commence. The project is now in its second year with the build of the shell complete and works to the public realm commenced.

Paper 2

GLLEP Manufacturing Board Operational Update

Since April 2019 South Kesteven District Council have been ensuring the building can be handed over for internal fit out. The University Centre itself will be ready for University use as of September 2019.



6 Made in Gainsborough - Halina to update

Made in Gainsborough (MiG) is the operating name for an employer led group of engineering businesses who, together with Lincoln College, are seeking to develop a new engineering apprenticeship provision to meet demonstrable employer needs in Gainsborough Town. The business members of MiG include Eminox, Wefco, AMP Rose, Hooton, Regal, Cleantech, Schulman and Trepko, with a combined requirement for circa 20 engineering apprentices a year.

Working with Lincoln College, the scheme involved the refurbishment of the Vocational Centre at Gainsborough College converting it into a fully operational Engineering Department.

Overall funding for phases 1 and 2 will contribute towards the purchase of equipment to enable the delivery of tailored apprenticeship programmes. In addition to the £2,913 already approved towards the scheme for phase 1 the Board also endorsed a provisional allocation of £14,492 future funding towards the scheme in partnership with WLDC (provisionally allocating the same amount to total £28,984) subject to a review in Year 2 of the success and impact of Phase 1.

7 Export Support Service for Small businesses

International trade continues to be one of the main priorities for the Growth Hub. We are keen to enable more businesses to access new market opportunities and be more confident in trading internationally. This is resulted in a small procurement exercise to secure a delivery agent to provide a service for small businesses within Greater Lincolnshire. This will act as a stepping stone to help them to access the national Department for International Trade (DIT) offers.

Paper 2

GLLEP Manufacturing Board Operational Update

The support will be delivered in harmony with the existing DIT International Trade Support, eg, www.great.gov.uk , International Trade Advisors, and E-commerce Advisors.

A dedicated Export Adviser, Mike Stokes, will be available on a call off basis.

Small and micro businesses will be offered two adviser-led services, linked to export journey stage:

- **Export Readiness Assessment** -for businesses that are interested in exporting but aren't convinced that their current products or services are exportable and want to understand the actions they need to take to become export ready.
- **In Depth Export Diagnostic** -for businesses that have an export-ready product or service or that already have some international customers, but no coherent export strategy. This review covers nine areas: the business, products & services, export objectives, planning & market knowledge, people & experience, operations, sales & marketing, finance and Brexit impacts.

The support offer will also include 7 half day Export Basics Workshops (one per district)

- Finding new customers by going global (export basics)
- Global route mapper (market selection and research)
- Creating a global shop window (international ecommerce)

The programme commenced in April 2019 and will be evaluated annually.

8 Made in Lincolnshire Awards

The 2019 Made in Lincolnshire Awards are open, the partnership consists of Business Lincolnshire Growth Hub, Streets Accountants and NatWest Bank.

Made in Lincolnshire seeks to celebrate the area's excellence in manufacturing and its well-earned reputation for innovation within the sector. It also aims to showcase the diversity and creativity of those manufacturing in Lincolnshire. Previous entries have been both strong in number and quality with this year's expected to be no different. They have showcased some well-known and some less well-known gems from the county's manufacturers, encompassing large, small and artisan.

The award categories are:

- **Made in Lincolnshire Sold Locally**
- **Made in Lincolnshire Sold Nationwide**
- **Made in Lincolnshire Sold Overseas**
- **Made in Lincolnshire for Many Generations**
- **Made in Lincolnshire - Food & Drink Manufacturing (New for 2019)**
- **Made in Lincolnshire World Class**

Individuals are invited to self-nominate or nominate another business/product stating why they think it is special and worthy of recognition, for example it may be revolutionary, innovative or solve a problem.

Paper 2

GLLEP Manufacturing Board Operational Update

Previous winners have included Red Hill Farm, MTAG Composites Ltd, Jointine Products (Lincoln) Ltd, Chiselwood Limited, Sports & Leisure Brands Ltd, Micronclean Ltd, Bailey Trailers Ltd and Pretorian Technologies Ltd.

The deadline for entries is Friday 5th July 2019. To submit your entry and to book your free place at this event please visit www.madeinlincolnshire.co

The nominees and overall celebrants will be announced at the Made in Lincolnshire celebration event on Thursday 19th September 2019 at Dynex Semiconductors Ltd.

Paper 3

Boston College Engineering, Manufacturing and Technology Centre



1 Background

- 1.1 Boston College is one of the first recipients of the Skills Capital Programme, EMAT (Engineering, Manufacturing and Technology), will receive £2.8 million towards a £4.9 million project to create an industry-driven training facility that will stimulate growth and productivity across engineering, manufacturing and agri-tech in Boston. The project is specifically designed to improve the skills and talent of the current and future workforce and to support key strategic sectors. Once fully established it will support an additional 600 learners per year in LEP priority sectors and will include industry approved workshops for practical skills development, teaching spaces, and an extension to existing construction provision

2 Update

- 2.1. Boston College will open its new EMAT centre in November 2019. EMAT is an Industry-focused education centre that concentrates on providing both academic and practical skills from Level 2 to Level 6. A range of engineering subjects are available to employers from Fabrication, Machining, Pneumatics, Electronics, Renewable and Robotics, with a dedicated environment for Computer Aided Design (CAD) and Computer Numerical Control (CNC). Employers will be able to access bespoke training to re-skill and up-skill their workforce in flexible delivery models. The centre will prepare individuals with engineering skills, delivered by our industry trained specialists, to meet local and national employer needs, providing employers with a competitive advantage and closing the skills gaps.

Boston College Engineering, Manufacturing and Technology Centre



The EMAT Centre will include an innovative hub, two workshops that will provide space for traditional and modern design, maintenance and manufacturing techniques, an electronics laboratory, CAD/CAM suite, three classrooms, changing rooms and a break-out space.

COURSES

		Duration	Full/Part Time
Full/Part Time	Engineering Level 2	1 Year	Full Time
	Engineering Extended Diploma Level 3	2 Years	Full Time
University Level	Engineering HNC Level 4	1 Year	Full Time
	Engineering HND Level 5	2 Years	Full Time
Apprenticeships	Engineering Technology Apprenticeship Level 2	2 Years	Attendance Varies
	Engineering Technology Apprenticeship Level 3	2 Years	Attendance Varies

 www.boston.ac.uk

 info@boston.ac.uk

 01205 313218

 @bostoncollegeuk