




Greater  
Lincolnshire  
LEP Conference



# WORKFORCE OF THE FUTURE

7<sup>TH</sup> NOVEMBER 2023 / 8:15AM - 2:15PM  
#LEPCONFERENCE2023



EPIC Centre, Lincolnshire Showground,  
Grange-de-Lings, Lincoln, LN2 2NA

IN ASSOCIATION WITH



# AGENDA

## LEP CONFERENCE PROGRAMME

### PART 1: LEP IMPACT 08:45AM - 09:25AM

|         |                            |  |  |           |
|---------|----------------------------|--|--|-----------|
| 8:45 AM | <b>WELCOME</b>             | Welcome  | <b>Mark Webb</b><br>Managing Director/E-Factor Group Ltd, Greater Lincolnshire LEP Board Director/SME Champion | West Hall |
|         |                            | Chair Interview                                  | <b>Neal Juster</b><br>Vice Chancellor University of Lincoln, Chair LEP   | West Hall |
|         |                            |  | <b>Ruth Carver</b><br>CEO, LEP   | West Hall |
| 9:10 AM | <b>IMPACT STORIES</b>      | Health & Care                                    | <b>Nikki Cooke</b><br>CEO, LIVES, Chair Health & Care Enterprise Board   | West Hall |
|         |                            | Defence  | <b>Steve Davies</b><br>Managing Director, SRC, GL Defence & Security Cluster                                   | West Hall |
|         |                            | UK Food Valley                                   | <b>Louise Motola</b><br>CEO, Bridge Farm Bioscience  | West Hall |
| 9:25 AM | <b>DEMONSTRATION ARENA</b> | Demonstration Arena<br>Networking & Refreshments |  | East Hall |
| 9:40 AM |                            | Solar Powered Electric Car Circuit Race          |  | Forecourt |



## PART 2: WORKFORCE OF THE FUTURE 10:05AM - 10:45AM

|         |                                |  |  |           |
|---------|--------------------------------|--|--|-----------|
| 10:05AM | <b>WORKFORCE OF THE FUTURE</b> | Keynote Speaker                                  | <b>Dr Paul Redmond</b><br>Author, speaker, presenter | West Hall |
| 10:35AM |                                | Q&A  | <b>Dr Paul Redmond</b><br>Author, speaker, presenter | West Hall |
| 10:45AM | <b>DEMONSTRATION ARENA</b>     | Demonstration Arena<br>Networking & Refreshments |  | East Hall |

## PART 3: EXPERT PANELS 11:25AM - 12:40PM

|                  |                            |   |   |           |
|------------------|----------------------------|---|---|-----------|
| 11:25AM          | <b>PANEL 1</b>             | <b>What will the workplace &amp; workforce look like in 2035 in Greater Lincolnshire?</b> |   | West Hall |
|                  |                            | Panel Chair   | <b>Dr Paul Redmond</b><br>Author, speaker, presenter              |           |
|                  |                            | Panellist   | <b>Lindsay West</b><br>Co-Founder of VISR Dynamics                |           |
|                  |                            | Panellist   | <b>Emma Olivier-Townrow</b><br>Director, The Business Creative    |           |
|                  |                            | Panellist   | <b>Guy Moreton</b><br>Exec Chairman, More People                  |           |
|                  |                            | Panellist   | <b>Melanie Weatherley</b><br>Chair, Lincolnshire Care Association |           |
| 11:50AM          | <b>Q&amp;A</b>             |   |   | West Hall |
| 12:00PM          | <b>PANEL 2</b>             | <b>How is technology changing workplaces in Greater Lincolnshire?</b>                     |   | West Hall |
|                  |                            | Panel Chair   | <b>Dr Paul Redmond</b><br>Author, speaker, presenter              |           |
|                  |                            | Panellist   | <b>James Brown</b><br>Managing Director Lapwing                   |           |
|                  |                            | Panellist   | <b>Therese Lord</b><br>CEO Construct3D                            |           |
|                  |                            | Panellist   | <b>James McIntosh</b><br>Chief Commercial Officer, CATCH          |           |
|                  |                            | Panellist   | <b>Kelly Bindemann</b><br>CTD Operations Manager, Inzpire         |           |
| 12:25PM          | <b>Q&amp;A</b>             |   |   | West Hall |
| 12:35PM          | <b>CLOSE</b>               | <b>Neal Juster</b><br>Vice Chancellor University of Lincoln, Chair LEP                    |   | West Hall |
| 12:40PM - 2:15PM | <b>DEMONSTRATION ARENA</b> | Demonstration Arena<br>Networking & Lunch   |   | East Hall |

# WELCOME

Welcome to the Greater Lincolnshire LEP  
Annual Conference 2023

## DEAR DELEGATE

As my first conference in post as the Chair of the Greater Lincolnshire LEP, I am delighted to welcome you here today as we join forces to discuss the topical subject of the **WORKFORCE OF THE FUTURE**. We will consider the configuration of workplaces and the skills of our workforces needed to transform our businesses and grow the economy.

In my primary role as Vice Chancellor at the University of Lincoln, I am very aware of the transformative times we are living through. The changes around us bring great opportunity but also create uncertainty. It is critical that we prepare ourselves and the next generation of our workforce to thrive in this environment.

Today, colleagues from all corners of Greater Lincolnshire gather to celebrate our collective achievements, to offer thought provoking discussion, and to showcase some of the very high-tech solutions already underway. This is made possible due to the fantastic Lincolnshire businesses and academics delivering world leading innovation.

Over the last few years, we have had a consistent focus on our competitive sectors. We have promoted their advantages and facilitated investment. This is starting to deliver results. Currently we are pursuing an inward investment pipeline exceeding £1bn. Understanding the opportunities in emerging sectors is critical for our economic and employment growth. As a region we have such an exciting story to tell, with cutting-edge industries in sustainable energy; advanced manufacturing; agri-food innovation; and defence. The impact storytelling session that begins our conference will give voice to our successes.

Today we give our businesses and partners a platform to tell our story, showcase our innovation, and debate the prominent questions, as we also welcome a national keynote speaker: Dr Paul Redmond from the University of Liverpool. He will provide a global as well as local context to the conference theme.

Welcome to the LEP Annual Conference.

## NEAL JUSTER

CHAIR, GREATER  
LINCOLNSHIRE LEP  
VICE CHANCELLOR,  
UNIVERSITY OF LINCOLN



WE HAVE PROVIDED

**19,000**  
HOURS OF  
COMPREHENSIVE  
SUPPORT AND  
ADVICE

TO BUSINESSES  
THROUGH OUR  
GROWTH HUB

WE HAVE PART  
FUNDED THE

**WORLD'S  
LARGEST  
OFFSHORE WIND  
LIVING LAB &  
A 5G TESTBED**  
THROUGH OUR  
**CLEAN GROWTH  
ACCELERATOR  
FUND**

WE HAVE DELIVERED

**75**  
SIGNIFICANT  
GROWTH  
PROJECTS  
& PROGRAMMES

WE HAVE WORKED WITH  
**26,000 BUSINESSES**  
ACROSS THE BUSINESS LINCOLNSHIRE  
GROWTH HUB PROGRAMME

WE UNLOCKED INVESTMENT WORTH  
**£425 MILLION**  
FOR TRANSFORMATIONAL SCHEMES

OUR  
**HUMBER  
FREEPORT**  
GOVERNMENT FUNDING & ENDORSEMENT  
FOR PROGRESSION

WE HAVE SUPPORTED OVER  
**10,500**  
LEARNERS THROUGH OUR  
PROJECTS & PROGRAMMES

WE HAVE LAUNCHED THE NATIONALLY SIGNIFICANT  
**UK FOOD VALLEY**  
WITH £70 MILLION INVESTED IN AGRI SKILLS

WE HAVE AWARDED  
**£13.7**  
MILLION IN  
BUSINESS  
GRANTS  
THROUGH THE BUSINESS  
LINCOLNSHIRE GROWTH HUB

WE HAVE LAUNCHED A  
**GREATER LINCOLNSHIRE DEFENCE  
& SECURITY NETWORK**

WE ARE WORKING ACROSS  
**116**  
SCHOOLS AND COLLEGES THROUGH  
OUR CAREERS HUB

WE HAVE SECURED OVER  
**£100 MILLION**  
OF NEW PARTNERSHIP R&D PROJECTS  
WITH THE FOOD & FARMING INDUSTRY

## PART 1

# IMPACT

08.45AM - 9.10AM

We are launching our LEP Annual Conference with an interview with the new Chair; Neal Juster, and a focus on highlights and progress over the last year with a strong emphasis on our economic impact across the evolution of the Greater Lincolnshire LEP. To bring this to life, this year we are introducing voices from business to bring the economic growth stories to life in our Impact Success Stories.

## WELCOME & INTERVIEW 08:45AM - 09:10AM



### MARK WEBB

**MANAGING DIRECTOR,  
E-FACTOR GROUP LTD /  
GREATER LINCOLNSHIRE  
LEP BOARD DIRECTOR / SME  
CHAMPION**

Mark is the Managing Director of E-Factor Group Ltd, the largest commercial property landlord in Northern Lincolnshire that uniquely invests all its profits into Business support for SMEs.

Mark spent many years in publishing, from sales manager at The Guardian, to MD at The Grimsby and Scunthorpe Newspapers, before starting up his own successful weekly newspaper.

Now running E-Factor Group, Mark is firm advocate for the essential part small and medium enterprises (SMEs) play in local economies. He is a member of the North East Lincs Local Development and Growth Board, a Director of the Enterprise Agency, and became a LEP Director earlier this year taking on the role of SME Champion.



### NEAL JUSTER

**VICE CHANCELLOR,  
UNIVERSITY OF LINCOLN /  
CHAIR, GREATER  
LINCOLNSHIRE LEP**

Neal took over as Vice Chancellor of the University of Lincoln in October 2021. He holds a BSc degree in Mechanical Engineering and a PhD in Computer-Aided Design, both from the University of Leeds. His research interests were around computer-aided design including rapid prototyping and the use of virtual reality in the design and manufacturing process.

He has an extensive experience in university management and has worked as the Senior Vice Principal and Deputy Vice Chancellor at the University of Glasgow, Dean of Faculty of Engineering at the University of Strathclyde and Senior Lecturer in the Department of Mechanical Engineering at the University of Leeds.



### RUTH CARVER

**CHIEF EXECUTIVE,  
GREATER LINCOLNSHIRE  
LEP**

Ruth is Chief Executive for the Greater Lincolnshire LEP and leads in the planning, development, direction, and management of the LEP's operation as directed by the board and has led the evolution of the LEP since its inauguration in 2011. Ruth implements the business plan and acts as an ambassador for the LEP in relevant forums. She is an experienced economic development and regeneration practitioner, with a lengthy track record in international trade and economic development.

# IMPACT SUCCESS STORIES 09:10 AM - 09:25 AM



## NIKKI COOKE

**LIVES, CHIEF EXECUTIVE OFFICER / CHAIR OF HEALTH & CARE ENTERPRISE BOARD**

Nikki is the Chief Executive of LIVES, having joined as the charity's first Chief Executive in 2016 at a time when both the health system and the charity sector are under significant pressure and scrutiny. In the intervening years LIVES has grown into a nationally recognised force in pre-hospital emergency medicine under Nikki's leadership. The planned development of the LIVES Centre for Pre-Hospital Emergency Medicine is challenging the way in which we train people of all backgrounds to respond and act in the most challenging circumstances while keeping them safe both physically and psychologically.

Originally from New Zealand, Nikki has spent nearly 25 years in the UK where she has had a wide-ranging background working in the commercial world, NHS and the third sector. Nikki is a board member of the Greater Lincolnshire Local Enterprise Partnership and chair of its Health & Care Enterprise Board, a director of the National Centre for Rural Health and Care, and a trustee of two local charities.



## STEVE DAVIES

**MANAGING DIRECTOR, SRC / GREATER LINCOLNSHIRE DEFENCE & SECURITY CLUSTER**

Stephen Davies is the Managing Director of SRC UK and leads efforts to support SRC UK's customers with electronic warfare (EW) modernisation and intelligence mission data (IMD) efforts and is an experienced RAF veteran in CEMA, Systems Design and ISR/ISTAR and Multi Domain Operations. An ex Head of Training with a deep understanding of training needs, training design and training facilitation, Stephen holds a Master's Degree in Informatics and practical experience in RF counter Stealth.

SRC UK plays a major role in supporting the EW modernisation effort to help protect warfighters and is an experienced Air Force Wing Commander with over 35 years of demonstrated success in the Royal Air Force. His background includes experience in defence intelligence, surveillance and reconnaissance, as well as radar and EW programs. Most recently Davies served as Deputy Senior Intelligence Officer, F-35, and was responsible for coordinating the requirements of the United Kingdom, Canada, Australian F-35 Lightning II, reprogramming laboratory.

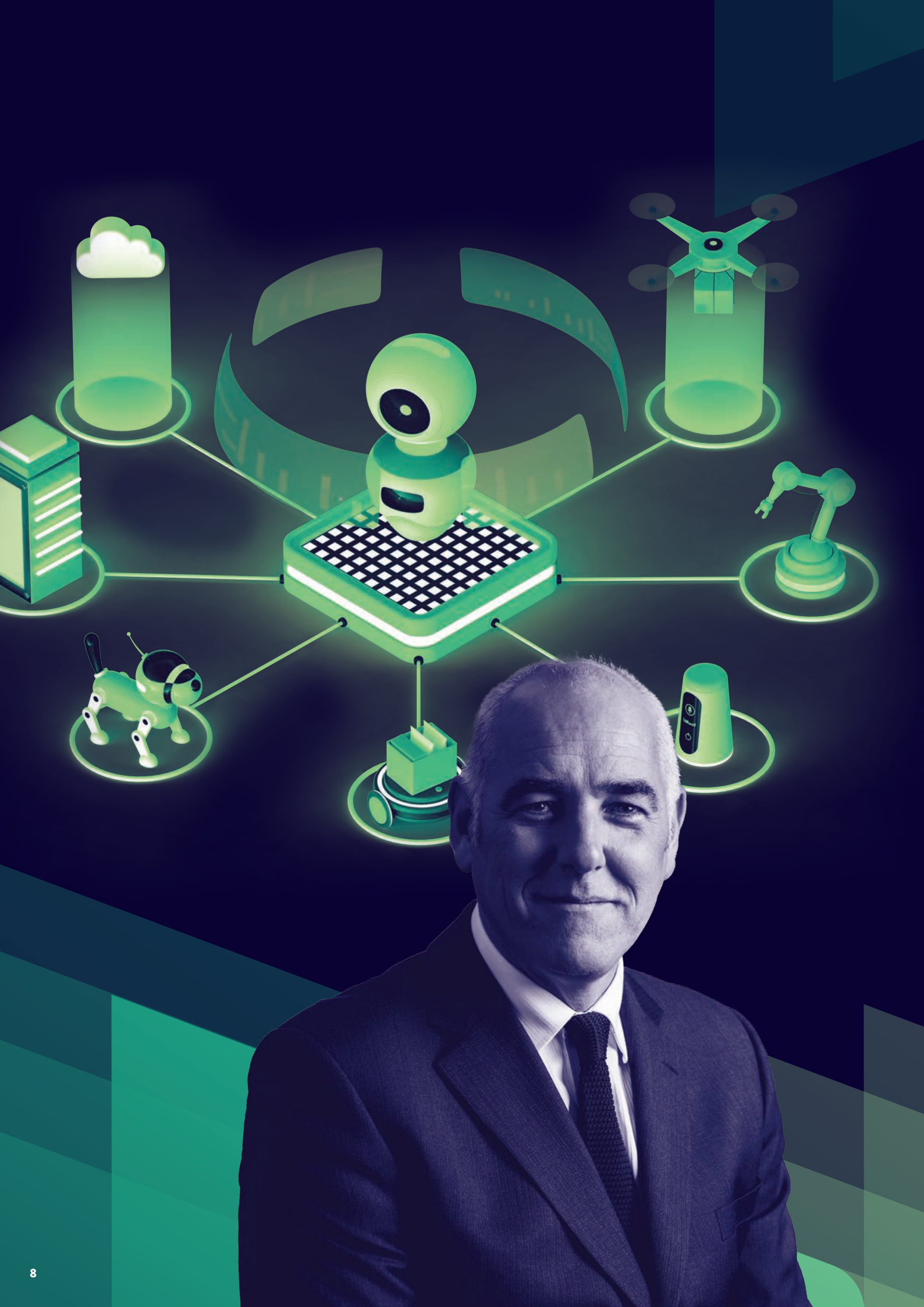


## LOUISE MOTALA

**CEO, BRIDGE FARM BIOSCIENCE**

Louise joined Bridge Farm Group as Commercial Director in 2017 to support the growth of the business and the development of the highly sustainable Clay Lake glasshouse. She became Group Managing Director in 2019, alongside developing the Horticulture business, where she now leads the creation of Bridge Farm Bioscience. After 5 years of R&D activity and a recent £10m investment in a new facility, Bridge Farm Bioscience is nearing commercialisation of its plant-derived molecules and is transitioning an established Horticulture business into a producer of high value molecules for use in the nutraceutical, personal care, and pharmaceutical sectors.

Prior to joining Bridge Farm, Louise spent many years in grocery retail as a buyer and category manager for Waitrose, Morrisons, and Asda.





## PART 2

# WORKFORCE OF THE FUTURE

10:05AM - 10:45AM

In Part 2 we introduce the conference theme and our headline speaker; Dr Paul Redmond in an inspiring and thought-provoking keynote insight into how workplaces and people are evolving and the likely rapid change over the next decade or so.

Expect Paul to include recruitment; different working patterns; advances in digital and technology; multiple generations - their needs, skills and behaviours; workplaces and spaces; and what new jobs are created as old jobs are phased out. The keynote will be concluded with the opportunity for questions from the audience.

## KEYNOTE 10:05AM - 10:35AM

### PAUL REDMOND

**DIRECTOR OF STUDENT EXPERIENCE & ENHANCEMENT, UNIVERSITY OF LIVERPOOL / AUTHOR / KEYNOTE / EMPLOYMENT GURU**

Dr Paul Redmond is leading expert on generations and the graduate labour market. An excellent keynote speaker and specialist on employment, Paul is also a presenter, author, researcher, media contributor whose work centres on the changing world of work and the challenges facing both students and graduate recruiters.

Paul is currently the Director of Student Experience and Enhancement at the University of Liverpool and is one of the UK's leading experts on the graduate employment market. During his career he has worked at many leading universities and has been responsible for guiding the careers of thousands of students and graduates. He has presented at numerous conferences and events around the world. In

addition to writing regularly for national newspapers and other publications, he is a frequent guest on both radio and TV, appearing on BBC and independent news and current affairs programmes. Since 2014, Paul has produced a regular, and highly popular, diary column for the UK's Institute of Student Employers.

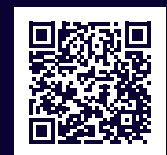
Paul's media work includes numerous BBC and independent news programmes and bulletins. With the BBC and Tiger Aspect he collaborated in the making of *Who gets the best jobs?* a groundbreaking series of documentaries on the impact of social class on the graduate job market.

Paul is the author of several books, including the best-selling *The Graduate Jobs Formula*, *A Parent's Guide to Graduate Jobs*, *Talking about my Generation*, and has also written and published numerous other reports, studies and research publications.

In 2010, in recognition of his writing and research, Paul was awarded a Fellowship of the Royal Society of Arts.

**Q&A 10:35AM - 10:45AM**

**SCAN THIS QR CODE  
TO POST YOUR  
QUESTIONS FOR  
THE Q&A**



PART 3

# EXPERT PANELS

11:25AM - 12.40PM

**PANEL 1:** 11:25AM - 11:50AM

## WHAT WILL THE WORKPLACE & WORKFORCE LOOK LIKE IN 2035 IN GREATER LINCOLNSHIRE?

Hosted by Dr Paul Redmond, this panel explores what future generations might expect from employers and vice versa, what types of training and skills people will need in 10+ years, and how younger generations' demands on work life balance could impact the workplace, working styles, and recruitment in the future.





**LINDSAY WEST**  
CO-FOUNDER OF  
VISR DYNAMICS

Lindsay West is an entrepreneur with a career spanning over 35 years in the business world, currently serving as the Joint Managing Director of Garthwest Packaging and POS Manufacturing. Alongside his work in the packaging industry, Lindsay is also Co-Founder of VISR Dynamics Immersive Technology, a pioneering venture at the forefront of immersive technology solutions. Additionally, he is a Founding Board Member of the Yorkshire and Humber Institute of Technology, where he contributes his expertise to shape the region's educational and technological landscape.

Lindsay's most recent endeavour involves founding the Metaverse for Education and Training Open Standards Forum, aiming to establish our region as a prominent global hub for spatial, immersive, and metaverse technologies. With a steadfast vision, Lindsay West strives to forge a seamless career pathway from education to employment within these transformative fields. Lindsay firmly believes that our region should become the national centre of excellence for immersive and spatial technology and that we can build a new economic vertical for the people who live here.



**EMMA OLIVIER-TOWNROW**  
DIRECTOR, THE BUSINESS  
CREATIVE / BUSINESS  
DEVELOPMENT MANAGER,  
STOKES TEA AND COFFEE  
& PANORAMIX LTD / LEP  
VISITOR ECONOMY BOARD

Emma Olivier-Townrow, also known as The Business Creative, is a visionary business consultant based in Lincolnshire. With a diverse background as an educator, facilitator, networker, government business mentor, and business transformation lead. Emma specialises in driving productivity growth and revenue creation through the power of innovation.

As the Chair of Team Lincolnshire and Chair of Grimsby's Arts Council NPO Culture House, Emma is also a board member of The Destination Lincolnshire; Lincoln Connected Project, and Lincolnshire FA Inclusion Advisory Group. Emma is dedicated to promoting sustainability, diversity, inclusion, and equity in all business operations. In addition to her consultancy work, Emma serves as the Business Development Manager for Stokes Tea & Coffee and Panoramix Ltd. With her passion for customer care, sustainability, culture and the arts and 30 years of successful results in both the public and private sector, Emma combines innovation, compassion, and business acumen to enrich business revenue and growth.



**GUY MORETON**  
EXECUTIVE CHAIRMAN,  
MOREPEOPLE

A graduate of Nottingham University's School of Agriculture, Guy is a sales and marketing specialist who pioneered the marketing of cut flowers and plants to multiple retailers in the UK. He held Commercial Director and MD roles in some of the country's largest produce and horticultural businesses before setting up MorePeople in 2000.

MorePeople is a specialist recruitment business for the Fresh Produce, Food, Agriculture, Horticulture and Garden Industries. Working across the UK and internationally the majority of placements are for permanent, full-time professional roles ranging from Graduates to Senior Directors. MorePeople takes a functional approach to recruitment with dedicated teams for all areas of business and comprises of extremely knowledgeable ex-industry professionals and professional recruiters who are passionate about the sectors, and who can advise on industry trends and the recruitment market.

Guy is responsible for recruitment of Director level roles and specialises in working with Board Directors and Non-Executive Directors in the SME marketplace.



**MELANIE WEATHERLEY MBE**  
 CHAIR, LINCOLNSHIRE CARE ASSOCIATION,  
 CEO WALNUT CARE / LEP HEALTH & CARE  
 ENTERPRISE BOARD

After working as a chartered accountant for many years, Melanie co-founded Walnut Care in 2002.

Walnut Care delivers domiciliary care for adults across Lincolnshire. The company is one of Lincolnshire County Council’s lead providers of adult home care in the county and employs over 200 people. Since 2002, Melanie has served as CEO. Walnut Care is a family run, independent business and bases its central operation in Langrick, just outside of Boston.

As a passionate advocate for the care industry, Melanie is the Chair of the Lincolnshire Care Association. Before taking up this position in July 2016, Melanie previously served as the Vice Chair of the same association for eight years, since 2008. The aim of the organisation is to represent all types of care providers across the county.

In April 2018, Melanie was nominated and approved to the position of co-chair of the Care Association Alliance. The CAA is a national body which brings together representatives of care associations from across the country, to engage with health and care officials at the highest level of governance.

Through these roles, Melanie has become a respected commentator on care and health issues within Lincolnshire and more widely in the UK.



**SPOT THE DOG (YELLOW)**  
 OWNER – LINCOLN INSTITUTE OF  
 AGRI-FOOD TECHNOLOGY

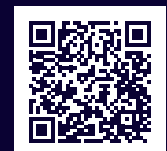
Spot forms part of a wider suite of robotics used by the University of Lincoln to explore technological advancement. This is his first appearance at the LEP Annual Conference, and he is very excited to meet a fellow Spot from the construction sector and to interact together to showcase their collaborative abilities.

Spot is a quadrupedal dynamic sensing platform developed by Boston Dynamics, with the primary function to provide insights into routine operations, site health and potentially hazardous situations within the workplace. Often deployed in factories and construction sites, Spot is equipped with a range of technology and features which make him hugely adaptable when traversing rough and changing terrain. With all this in mind, it is easy to see how Spot can be utilised in an agricultural setting.

The University of Lincoln is currently trialling a Spot platform with an added manipulator arm, in an agricultural setting by carrying out field surveys by autonomously monitoring aphid traps within a field. Spot uses his manipulator arm to observe pre-placed traps and collect data on the number of pests inside - a time-consuming job that would otherwise have to be carried out manually, and is an example of the many ways this dynamic platform can be utilised to help streamline agricultural processes.

**Q & A 11:50 AM - 12:00 PM**

**SCAN THIS QR CODE  
 TO POST YOUR  
 QUESTIONS FOR  
 THE Q&A**





**PANEL 2:** 12:00PM - 12:25PM

# HOW IS TECHNOLOGY CHANGING WORKPLACES IN GREATER LINCOLNSHIRE?

Hosted by Dr Paul Redmond, this panel will discuss and debate the impact that technology, AI, and automation will have on the workplace and the skills needed to support this in the future.



## JAMES BROWN

**MANAGING DIRECTOR, LAPWING ESTATES /  
CHAIRMAN, EARTH ROVER/ DIRECTOR,  
LAPWING ENERGY**

James Brown is an agricultural innovator deeply committed to the idea of a chemical-free future. James is the 5th generation of the family to run The Lapwing Estate group. Earth Rover is a key project part of James's vision and passion as to how the global food system can be fixed through disruption.

James founded Earth Rover through an agri-tech start-up, in 2017 with an optimistic idea to change the way organic produce is made. With a wealth of experience in agriculture and technology, and a world-leading engineering team, Earth Rover are now on a mission to make fresh, chemical-free produce the new norm for all using smart innovative technologies, AI and robotics.



## JAMES MCINTOSH

**CHIEF COMMERCIAL OFFICER, CATCH**

James joined the CATCH team in 2017 as Head of CATCH Skills after spending 7 years at HETA. James developed CATCH Skills working with strategic partners to ensure CATCH are at the forefront of industry training provision. James has a strong background in apprenticeships and competency-based training for industry in addition to working with employers across a variety of industries across the Humber region. James subsequently led on the creation of CATCH Apprenticeships as a specialist provider for the Oil & Gas, Petrochemicals, and Process industry sector.

As Chief Commercial Officer, James is now responsible for driving forward the commercial strategy for the business to widen the scope for employers in the process industries across the UK to meet their skills, competency, and apprenticeship requirements. This includes a focus on CATCH 2.0, and how industry can transition to net zero and match the skills demands of the future.





**THERESE LORD**  
CEO, CONSTRUCT3D

Therese's path into the world of 3D printing defies convention. With a career spanning two decades in education, she was dedicated to shaping young minds. However, in 2020, her life took an unexpected twist when her son, Jacob Lord, serendipitously invented the fastest 3D printer in the UK. Recognising the transformative potential of this innovation, Therese made a decisive shift from her teaching career to spearhead the commercialisation of this groundbreaking technology. The high speed 3D printers became an instant disrupter in the additive manufacturing world, resulting in substantial time and cost savings for industry.

Under the banner of CONSTRUCT3D, a registered trademark for their 3D printer brand, Therese and her team successfully launched a Kickstarter crowdfunding campaign in November 2022. The overwhelming support they received signalled a promising future for their revolutionary product. As their journey progressed, they made strategic investments, including securing a unit and installing a mezzanine by December 2022, effectively doubling their working space. By March 2023, the company achieved a significant milestone, with the production and dispatch of the first batch of super-fast printers. Since then, Seraph Technologies Limited trading as CONSTRUCT3D, has experienced continuous and cumulative growth, establishing itself as a prominent player in the 3D printing industry.



**KELLY BINDEMANN**  
CTD OPERATIONS MANAGER,  
INZPIRE

Kelly is an ex-serving senior officer in the Royal Air Force (RAF) with 16 years' experience as an Air Operations Officer, covering numerous overseas operational deployments and exercises directing complex air operations. Kelly has had a very varied military career to include a 2-year secondment to the Civil Aviation Authority and a 3-year appointment on exchange with the British Army. Kelly has significant command experience as an Executive Officer and Detachment Commander with responsibility for up to 250 personnel. More recent roles in Defence include Personal Staff Officer to the Chief of the Air Staff; responsibility for Strategic Force Development in Air Capability at Headquarters Air Command; Space wargaming, and RAF Innovation.

Kelly retired from the RAF in 2020 and is now delighted to be part of the Inzpire family. As the Gladiator Operations Manager at the Air Battlespace Training Centre (ABTC), Kelly is responsible for delivering one of Inzpire's largest service delivery contracts. Her team is responsible for the design and delivery of synthetic team and collective training for the RAF.



**SPOT THE DOG (BLUE)**  
OWNER - BALFOUR BEATTY

Spot was Balfour Beatty's first robotic employee and takes the lead as the autonomous eyes and ears on inaccessible or hazardous sites. He is responsible for detecting both routine health and safety issues, as well as taking on more dangerous tasks like hazardous gas detection and 3D progression scans during tunnel construction.

Construction sites are constantly adapting, and Spot provides a data capture solution to document progress, freeing up site supervisors, and enabling data-driven decisions. Spot can autonomously navigate construction environments, making automation for applications like job site reality capture and surveying a reality. Spot's agility and athletic intelligence means he can get around job sites that other robots and humans can't.

The robotic dog essentially captures a number of photos that may be combined to create a comprehensive blueprint or CAD design of the building structure, as well as specialising in advanced 3D scanning systems. Balfour Beatty have also invested in a state-of-the-art docking station that enables Spot to go for an autonomous walk, so he can now just go and charge himself before continuing his job.

Spot working alongside Trimble's X7 technology creates an autonomous system with up to 0.3mm accuracy.

With decarbonisation of plant used on construction sites increasing, options which include digital, automation, and remote-controlled kit to improve safety by removing the people-plant interface, is increasingly coming to the fore. Alongside the growth of electric plant and emerging hydrogen, Spot's role is essential.

**Q & A 12:25 PM - 12:35 PM**

**SCAN THIS QR CODE  
TO POST YOUR  
QUESTIONS FOR  
THE Q&A**



# DEMONSTRATION ARENA



**Balfour Beatty**

## BALFOUR BEATTY

Balfour Beatty is a leading international infrastructure group with 25,000 employees across the UK, US and Hong Kong leading the transformation of the infrastructure industry to meet the challenges of the future.

Trusted by their customers to deliver sustainable solutions and strengthen communities, Balfour Beatty finance, develop, build, maintain and operate the increasingly complex and critical infrastructure that supports national economies and deliver projects at the heart of local communities.

Collaborating with governments, their customers and partners, Balfour Beatty creates powerful new solutions, shapes thinking, create skylines and inspires a new generation of talent to be the change-makers of tomorrow.

[www.balfourbeatty.com](http://www.balfourbeatty.com)



**BAYSGARTH SCHOOL**  
Strive. Believe. Achieve.

## BAYSGARTH NORTHERN LINCOLNSHIRE GREENPOWER CENTRE OF EXCELLENCE

Greenpower Education Trust is a UK based charity with an outstanding track record in kick starting careers in engineering, helping unlock potential and spark enthusiasm for Science, Technology, Engineering and Maths (STEM) through the excitement of motorsport.

Baysgarth competed at the first ever street race in Hull in 2019, demonstrating impressive speed and endurance. The team went on to compete at numerous events, including a trip to the Internationals Finals at Silverstone, and now boasts an impressive line-up of vehicles: four F24's and two Goblins.

The school has put Greenpower into the curriculum and have cross referenced the engineering specification in KS4 to support independent skills and knowledge throughout Y10 and 11. This unique approach has placed students in apprenticeships within high end engineering firms at companies such as Ineos and Croda.

This year the electric cars, built from recycled materials, will be taking part in a live race on a circuit at the LEP Annual Conference, where delegates are invited to take part. Don't miss this fantastic opportunity taking place during the first demonstration session in the forecourt of the Epic Centre.

[www.greenpower.co.uk/news/centre-excellence-baysgarth-school-north-lincolnshire](http://www.greenpower.co.uk/news/centre-excellence-baysgarth-school-north-lincolnshire)





## BRIDGE: UNIVERSITY OF LINCOLN

The Bridge Advanced Engineering R&D Centre links business with innovation by providing access to technologies and methods at the forefront of research to create R&D solutions to provide effective problem solving and develop workforce skills through accredited training.

Bridge operates from the University of Lincoln and has a dedicated team of R&D project specialists working alongside the University's academic community.

It supports collaborative enterprise with dedicated funding from the European Regional Development Fund (ERDF) and the Greater Lincolnshire LEP (GLLEP). With several key, interlinked programs, each designed to increase the competitiveness of businesses in our region, promoting the security and sustainability of regional supply chains.

Bridge is showcasing 3D printing and a demonstration of materials characterisation and analysis for innovation support and R&D for businesses

[www.thebridge-lincoln.org](http://www.thebridge-lincoln.org)



## EAGLE EYE INNOVATIONS

Eagle Eye Innovations is a UK-based organisation specialising in Remote Piloted Aircraft Systems (RPAS) training, turn-key operational services, enhanced security services and independent consultancy.

The Tactical Operations Centre (TOC) is a mobile, dismantable, command, control and communications (C3) hub which can be used to support deployed Remotely Piloted Aircraft Systems (RPAS) operations, enhancing effectiveness, operational endurance, and connectivity. Available as both a 'pick-up truck' mounted or van-based system, the TOC can provide direct support to various platforms with the ability to integrate any hardware or software. Providing an off-grid power supply and shelter, it can stream live data from any RPAS in near real time and be utilised as a debriefing facility or provide a reach-back capability to decision makers at a Higher-Headquarters.

As part of this event, Eagle Eye will demonstrate a variety of RPAS used to provide training and operational delivery. The systems on display highlight significant advancements in technology, which when combined with the appropriate training, can provide the customer with an optimal solution to the most complex of requirements.

[www.eeinnovationsltd.com](http://www.eeinnovationsltd.com)



## EARTH ROVER

Earth Rover is an agri-tech start-up founded in 2017 with an optimistic idea to change the way organic produce is made. With a wealth of experience in agriculture and technology, and a world-leading engineering team, Earth Rover are now on a mission to make fresh, chemical-free produce the new norm for all using smart innovative technologies, AI, and robotics.

[www.earthrover.farm](http://www.earthrover.farm)



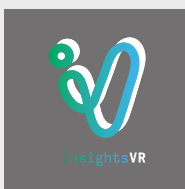
## GRANTHAM COLLEGE AND UNIVERSITY CENTRE

Grantham College & University Centre is a further and higher education college specialising in vocational subjects and qualifications and are committed to supporting the training needs of local people and employers. They have resources and expertise to deliver training in a wide range of disciplines from entry/ beginner level right through to degree level.

Grantham College & University Centre is proud to work with employers in the community to help them secure new talent and invest in the future of their workforce and work closely with employers to ensure their curriculum and delivery is informed by and closely aligned to employers' needs which in turn increases the future employability and successful progression of students.

View some of their latest technology on show.

[www.grantham.ac.uk/higher-education/dedicated-university-centre/](http://www.grantham.ac.uk/higher-education/dedicated-university-centre/)



## INSIGHTS VR

Insights VR (iVR) is focused on creating engaging and fit for purpose Virtual Reality experiences offering the ability to access off the shelf or custom learning experiences which are proven to increase employee engagement and enhance knowledge retention. This is achieved by offering 360-degree solutions using top of the range headsets, software and training solutions from dedicated and professional VR partners.

[www.insightsvr.co.uk](http://www.insightsvr.co.uk)



## LINCOLN INSTITUTE OF AGRI-TECH (LIAT) UNIVERSITY OF LINCOLN

The University of Lincoln is a global research leader in agricultural robotics.

Their agri-robotics team drives robotic innovation and technical advancement in agriculture, drawing on a large network of academic excellence, industry partnerships, and funding organisations. It pushes the state of the art in crop care, selective harvesting, and robotic phenotyping.

The team is currently participating in a collaborative project with the industry called Agri-OpenCore to accelerate the adoption of robotics in agriculture. This will be achieved by creating re-usable software components and standards which will be demonstrated in selective harvesting of soft fruit such as strawberries and tomatoes.

One of the exhibits presented during the event will be a strawberry-picking robot developed by Dogtooth Technologies, one of the industrial partners in the Agri-OpenCore project.

[www.lincoln.ac.uk/liat](http://www.lincoln.ac.uk/liat)



## NATIONAL CENTRE FOR FOOD MANUFACTURING

This team are showcasing the partnership project with Toyota to electrify the Grimsby fish van fleet which addresses the move to low-carbon challenges faced by Grimsby's fresh fish traders which travel across the breadth of the country. Introducing electric vehicles is aiding their long-term environmental and economic sustainability, working in partnership with NCFM's expertise in chilled, cold storage and transport technologies across the food supply chain.

TIAGo will also be making an appearance who is a fully collaborative mobile manipulator robot used the NCFM test factory for future research.

[www.lincoln.ac.uk/holbeach](http://www.lincoln.ac.uk/holbeach)



## NUCLEAR WASTE SERVICES

Nuclear Waste Services (NWS) is focused on managing the UK's nuclear waste safely and securely in the UK's first Geological Disposal Facility (GDF). A GDF will be a multi-generational programme and one of the largest environmental protection projects ever undertaken in the UK and represents the opportunity for Ebillions invested in the local area, and up to 4000 jobs created over the project lifetime.

Take a virtual journey with VR, deep underground into the vaults and tunnels of a GDF to explore the size and scale of this nationally significant infrastructure project.

[www.nuclearwasteservices.uk](http://www.nuclearwasteservices.uk)



## SERAPH TECHNOLOGIES LTD/ CONSTRUCT3D

A local success story, the UK's fastest 3D printers will be demonstrating their speed, quality, and precision, making 3D parts that will be on display made from a variety of polymers.

After receiving a 3D printer as a birthday present, Jacob Lord's hobby became designing and printing parts for Airsoft and eSk8 but realised that his printer wasn't up for the job, and changed the acrylic brackets to 4mm steel to create a true Core-XY.

The design underwent an unexpected test with COVID-19 causing shortages of PPE, resulting in a newly-designed, hyper-efficient face shield headband, producing them in under 11 minutes, while other printers took over half an hour.

Come and see the printer in action at this year's conference.

[www.construct-3d.com](http://www.construct-3d.com)



## SRC UK LTD

SRC UK specialise in Data Solutions and analytics across multiple domains including Finance, Intelligence and Government departments, delivering near real-time, actionable information for a diverse customer base. Coupled with Software capabilities and Research & Development expertise alongside bespoke training solutions, specialist consultancy and Solutions Architects, SRC offers a holistic solution to the challenging issues of next generation data development.

On demonstration are two of SRC's R&D products, a WASP dashboard, and Projile.

WASP is an all-source fusion platform and operates with real- or near-time data feeds and can utilise historic and reference data to elicit an enhanced holistic information understanding. Whilst Projile is the software solution to effectively empower agile teams as a solution for project management and provides automated metrics for a team or project performance.

[www.srcuk.com](http://www.srcuk.com)

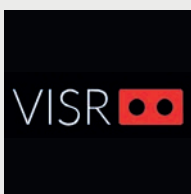


## TEC PARTNERSHIP

TEC Partnership, formerly The Grimsby Institute Group, is one of England's largest providers of further and higher education. With a rich history of developing innovative training and education solutions for the community, the Partnership comprises of the Grimsby Institute, University Centre Grimsby, Scarborough TEC, East Riding College, Skegness TEC, Modal Training, National Employer Training (NET), and the Academy Grimsby, which offers an alternative educational route for gifted 14–16-year-olds, and Career 6, the next generation of sixth form focusing on career paths.

Today the TEC Partnership will be represented by the Grimsby Institute, University Centre Grimsby, National Employer Training (NET) and Transafe Training, who will be on hand to discuss a sector-leading education and training portfolio that includes Skills Bootcamps, employability provision, driver training and other courses relating ports and logistics.

[www.tecpartnership.com](http://www.tecpartnership.com)



## VISR DYNAMICS

Over the past decade VISR has been at the forefront of XR innovation, spearheading the development of narrative-based learning metaverse technologies.

Based in Hull, VISR have developed a diverse range of cutting-edge products to an impressive portfolio of global clients.

As pioneers in an emerging field, VISR has exhibited innovative products at national and international tech expos. From XR developers and Unity experts to 3D artists and logistic coordinators, at its core VISR is driven by passion for creating immersive, narrative-driven experiences which help people and businesses grow in new and exciting ways.

Join over 35,000 active users already participating in the Stage Metaverse, a world leading immersive storytelling solution for creators and learners alike.

In our region we are building the nation's first truly spatial network between education and employment, empowering the workforce of the future for the workplace of the future. Join the VISR team for a demonstration of this real-time collaborative immersive experience.

[www.visr-vr.com](http://www.visr-vr.com)

# EXHIBITION STANDS



## CATCH

[www.catchuk.org](http://www.catchuk.org)



## EFACTOR

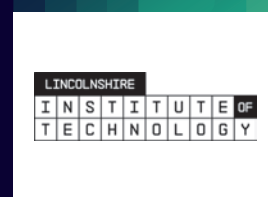
[www.e-factor.co.uk](http://www.e-factor.co.uk)



## LINCA

(LINCOLNSHIRE CARE ASSOCIATION)

[www.linca.org.uk](http://www.linca.org.uk)



## LIOT

(LINCOLN INSTITUTE OF TECHNOLOGY)

[www.liot.ac.uk](http://www.liot.ac.uk)



## MADE SMARTER

EAST MIDLANDS

[www.madesmarter.uk](http://www.madesmarter.uk)



## RISEHOLME COLLEGE

[www.riseholme.ac.uk](http://www.riseholme.ac.uk)



## UKAE

(UK ATOMIC ENERGY)

[www.gov.uk/government/organisations/uk-atomic-energy-authority](http://www.gov.uk/government/organisations/uk-atomic-energy-authority)



## GLEAM NETWORK

[www.gleamnetwork.net](http://www.gleamnetwork.net)

# FURTHER CONTACTS & SUPPORT

T: (0) 1522 550540

[WWW.GREATERLINCOLNSHIRELEP.CO.UK](http://WWW.GREATERLINCOLNSHIRELEP.CO.UK)

M: (0) 7799 074247

[WWW.UKFOODVALLEY.CO.UK](http://WWW.UKFOODVALLEY.CO.UK)

[WWW.BUSINESSLINCOLNSHIRE.CO.UK](http://WWW.BUSINESSLINCOLNSHIRE.CO.UK)

[WWW.TEAMLINCOLNSHIRE.CO.UK](http://WWW.TEAMLINCOLNSHIRE.CO.UK)

[WWW.GREATERLINCOLNSHIRERDSC.COM](http://WWW.GREATERLINCOLNSHIRERDSC.COM)



SCAN THIS QR CODE  
TO POST YOUR  
QUESTIONS FOR  
THE Q&A

  
Greater  
Lincolnshire  
LEP Conference

The logo for the Greater Lincolnshire LEP Conference, featuring a stylized graphic of three overlapping, colorful arrows (green, blue, and orange) pointing to the right, positioned above the text 'Greater Lincolnshire LEP Conference'.